

# Build your own Neolithic village

## Introduction:

Agriculture and animal husbandry develop during the Neolithic: human groups settle permanently in villages or caves. Pottery begins to be produced, and new needs arise (animal and human waste management, food storage, etc.).

## Instructions:

In this pack, you will find a cut-out picture with instructions for building a Neolithic village. Draw the elements of your Neolithic village or build them in 3D! You can use play plasticine, wooden sticks, pieces of cloth, leaves, rocks, etc. You will also find a cut-out Neolithic house. You can cut it out and build it following the instructions. Use your imagination!

Think: where might food be found in prehistoric times? Water? And the materials to make tools? Think, what resources do I want closer to my settlement?

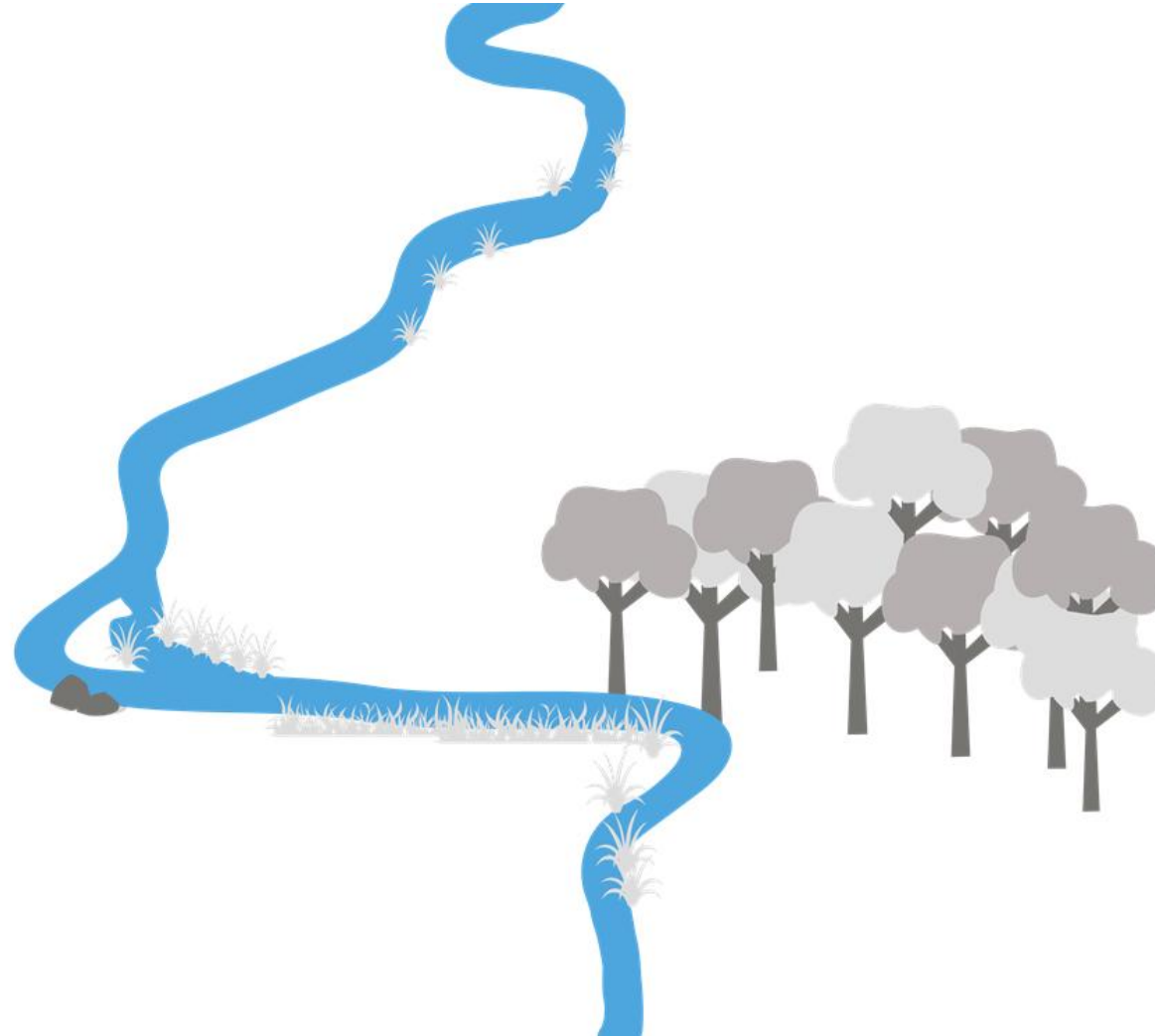
## Learning objectives:

With this activity, children will learn the different elements that might be found in a Neolithic settlement. They will also have to think about the elements they might need to survive and their location on the map. They will also develop their visual and imaginative skills.

You are living in the Neolithic period. Your group of 40 people just arrived at this place to settle themselves in the village where you'll live for many years.....

**Draw or build a place to:**

- ☐ Sleep
- ☐ Plant crops
- ☐ Shelter the animals (goats and sheep)
- ☐ Cook food (you already use cooking pots)
- ☐ Store food
- ☐ Create art
- ☐ Sew your clothes
- ☐ Make tools
- ☐ Other things you might think are important!



# Neolithic House 3D

Cut out, colour and follow the instructions to build your Neolithic house.

